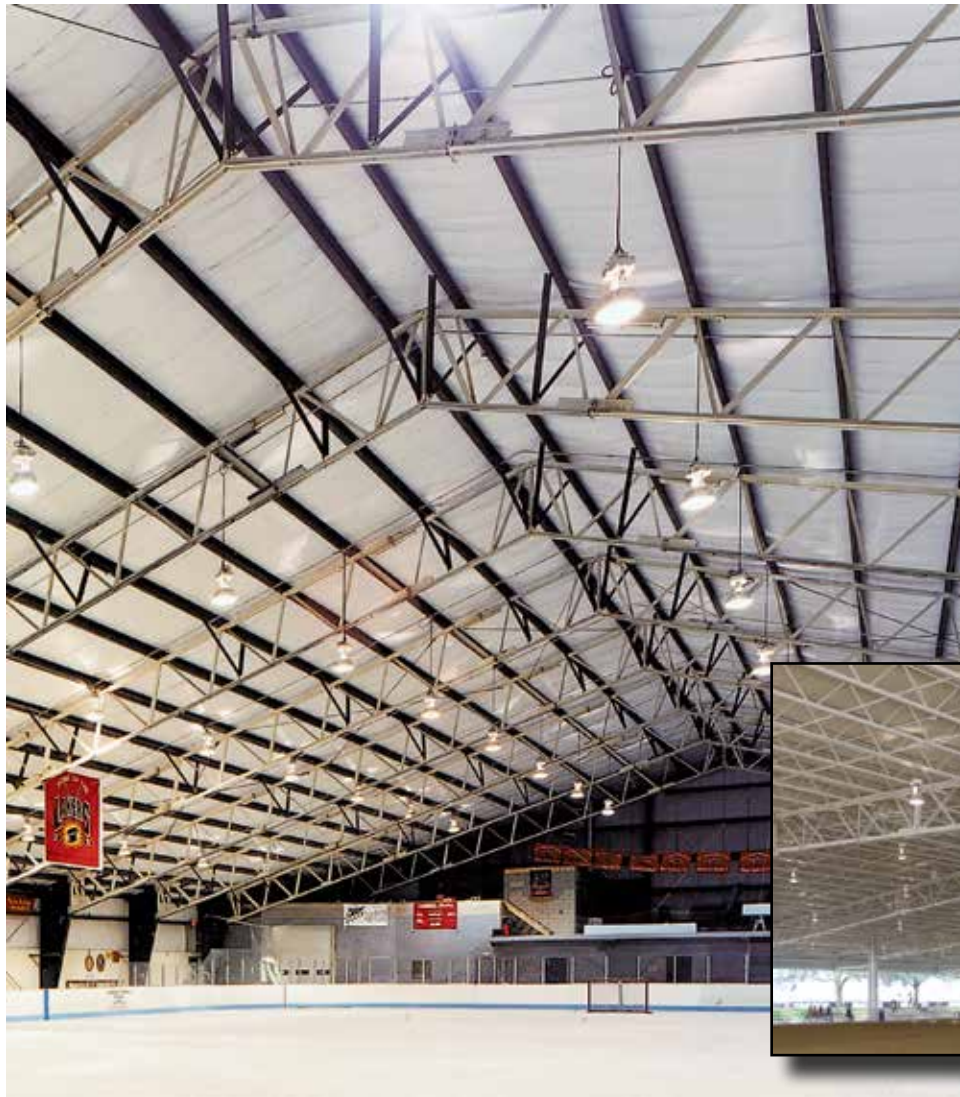




## TRUSS BEAM OPEN WEB FRAME

# FRAME SYSTEMS



### FEATURES

- Truss Beam frames allow HVAC ducts, wiring, sprinkler systems and lighting to be incorporated into the trusses
- Truss Beam frames provide column-free interiors up to 120' or more
- Can be designed with straight or tapered columns and with straight or pitched bottom rafters
- Roof pitch as low as 1/4:12

### BENEFITS

- Open web allows space to install sprinklers, lights and ductwork within the web to provide better clearance and better air circulation
- Attractive, architectural appearance
- Optimal material use for sustainable construction goals
- Clearspan without interior columns gives flexible floor space
- Fast construction for faster occupancy and faster ROI

# TRUSS BEAM OPEN WEB FRAME

Unique frame option with open rafters

If your building plans call for unobstructed, column free interior space, VP's open web Truss Beam frame offers long, clearspans along with the advantages of open web rafters.

The open web design of the Truss Beam frames holds down construction costs through optimal material use and reduction of required building heights. HVAC ducts, wiring, sprinkler systems and lighting can be incorporated through the trusses. The open web also provides for enhanced lighting dispersal for better visibility — and especially beneficial when used with daylighting.

Truss Beam frames can be designed with tapered or straight columns and can have a pitched or straight bottom rafter. Roof pitch can be as low as 1/4:12. With Truss Beam frames, any width or eave height can be achieved.

Truss Beam structural frames allow efficient layout of interior space by incorporating such design features as unlimited width, height and interior clearance flexibility. Features such as pinned base design and relatively low horizontal reactions applied to the footing can also reduce foundation costs.

VP's custom concept approach to design allows builders to use Truss Beam in conjunction with other VP framing systems (such as Continuous Truss or Continuous Beam) to provide owners the most economical solution. Truss Beam can also be used with other systems including block, tilt-up, conventional steel framing or even wood.

This 55 KSI steel, primary framing system consists of open web rafters supported on straight or tapered sidewall columns. Interior clearspan spaces can reach 120' or greater.

Truss Beam frames can be designed to accept any specified wind loads and crane loads. Works with secondary members including purlins, truss purlins and bar joist. Any girt placement can be utilized, including flush-mount, inset or outset.

Prior to any field finish coats of paint, a rust inhibitor primer is factory applied to the frame.

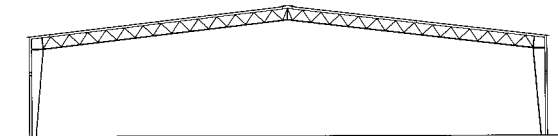
#### EXCELLENT CHOICE FOR:

- Aircraft Hangars
- Arenas
- Manufacturing
- Recreational Facilities

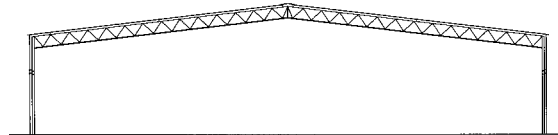
For information about this or any other VP product or service, contact your local authorized VP Builder.



#### TYPICAL TRUSS BEAM OPEN WEB FRAMES



TRUSS BEAM WITH TAPERED COLUMNS



TRUSS BEAM WITH STRAIGHT COLUMNS



Varco Pruden Buildings, 3200 Players Club Circle, Memphis, TN 38125

©All rights reserved. Varco Pruden Buildings® is a division of BlueScope Buildings North America, Inc. Varco Pruden meets or exceeds the most comprehensive testing and compliance standards in the building system industry. To learn more about our products, services and qualifications, visit our website, [www.vp.com](http://www.vp.com). **Building Solutions... one relationship at a time.**

2054 Truss Beam  
Issue Date: 2003  
Revised: 8/16